

ONE DOLLAR

\$1.00 PER CARD

POPPIN' WHEELIES



Any card may contain multiple winners



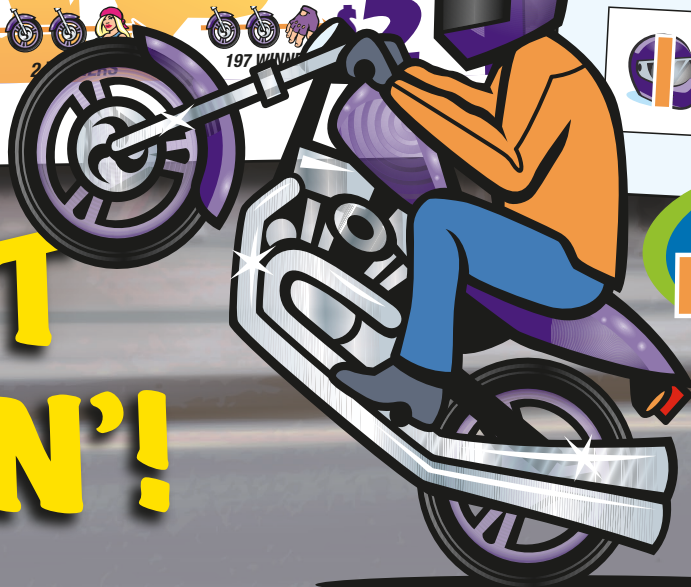
\$202 \$202 \$152 \$150
 \$125 \$102 \$102 \$102
 \$102 \$100 \$100 \$100
 \$100 \$100 \$100 \$100
 \$50 \$50 \$25

FORM 1119AS



IG1119AS

©2010 INTERNATIONAL GAMCO, INC. • OMAHA, NE ALL RIGHTS RESERVED 3-1-10



POPPIN' WHEELIES™

POPPIN' WHEELIES



\$1

Any card may contain multiple winners



\$100 10 WINNERS
 \$100 7 WINNERS
 \$50 5 WINNERS
 \$25 4 WINNERS
 \$2 204 WINNERS

©2010 INTERNATIONAL GAMCO, INC. ALL RIGHTS RESERVED FORM 1119AS



\$202



DAY-GLO WINBARS

KEEP IT POPPIN'!

CASHIER
 Always the right payout!
 ALL WINNING AMOUNTS
 SHOWN IN TICKET WINDOW

ANY CARD MAY CONTAIN MULTIPLE WINNERS

IMPORTANT NOTICE: Due to rapidly changing laws and regulations, we cannot be responsible for the legality of the use of this product by any particular purchaser. Each purchaser should determine for themselves that the use of this product is permitted in their locality.

Games with a ticket count exceeding 4,000, the top individual prize greater than \$500 or less than a 65% player payout and progressive pull-tab games are not available for sale in Pennsylvania, Louisiana, and Mississippi.

©2010 INTERNATIONAL GAMCO, INC. ALL RIGHTS RESERVED 3-8-10



International Gamco, Inc.
 the player's choice™

800-524-2626
 www.intlgamco.com

**POSTED
18
WINNERS**

POPPIN' WHEELIES FORM 1119AR/\$1.00			
TAKES IN:		3,136 @ \$1.00	\$3,136.00
PAYS OUT:			
8 Winners @	\$100.00	\$	800.00
8 Winners @	100.00		800.00
6 Winners @	55.00		330.00
14 Winners @	5.00		70.00
236 Winners @	1.00		236.00

DEFINITE PAYOUT	71.30%	\$2,236.00
GROSS PROFIT		\$900.00

5 DEALS PER CASE

EXTENDED PAYOUT

TAKES IN:		3,136 @ \$1.00	\$3,136.00
PAYS OUT:			
2	Winners @	\$201.00	\$ 402.00
1	Winner @	156.00	156.00
1	Winner @	110.00	110.00
2	Winners @	106.00	212.00
1	Winner @	105.00	105.00
4	Winners @	101.00	404.00
4	Winners @	100.00	400.00
1	Winner @	56.00	56.00
2	Winners @	55.00	110.00
2	Winners @	10.00	20.00
2	Winners @	6.00	12.00

5 Winners @	5.00	25.00
3 Winners @	3.00	9.00
2 Winners @	2.00	4.00

GROSS PROFIT \$900.00

ANY CARD MAY CONTAIN MULTIPLE WINNERS

2-17-

POSTER **ORDER**

16 WINNERS

CASES OR DEALS

POPPIN' WHEELIES FORM 1119CF/\$1.00

TAKES IN: 3,185 @ \$1.00 \$3,185.00

PAY OUT: 9 Winners @ \$100.00 \$ 900.00

6 Winners @	100.00	600.00
5 Winners @	55.00	275.00
10 Winners @	5.00	50.00

220 Winners @	2.00	440.00
DEFINITE PAYOUT	71.11%	\$2,265.00

DEFINITE PAYOUT 71.11%	\$2,200.00
GROSS PROFIT	\$220.00
5 DEALS PER CASE	
EXTENDED PAYOUT	
TAKES IN: 3,185 @ \$1.00 \$3,185.00	
PAYS OUT:	
3 Winners @ \$202.00	\$ 606.00
1 Winner @ 155.00	155.00
2 Winners @ 102.00	204.00
6 Winners @ 100.00	600.00
1 Winner @ 57.00	57.00
3 Winners @ 55.00	165.00
1 Winner @ 15.00	15.00
3 Winners @ 10.00	30.00

DEFINITE PAYOUT 71.11%	\$2,265.00
GROSS PROFIT	\$920.00
5 DEALS PER CASE	
EXTENDED PAYOUT	
TAKES IN: 3,185 @ \$1.00	\$3,185.00
PAYS OUT:	
3 Winners @ \$202.00	\$ 606.00
1 Winner @ 155.00	155.00
2 Winners @ 102.00	204.00
6 Winners @ 100.00	600.00
1 Winner @ 57.00	57.00
3 Winners @ 55.00	165.00
1 Winner @ 15.00	15.00
3 Winners @ 10.00	30.00
1 Winner @ 5.00	5.00
214 Winners @ 2.00	428.00
DEFINITE PAYOUT 71.11%	\$2,265.00

ANY CARD MAY CONTAIN MULTIPLE WINNERS 2-17-

POSTED 19

ORDER

WINNERS		CASES OR DEALS	
POPPIN' WHEELIES FORM 1119BN/\$2.00			
TAKES IN:		3,626 @ \$2.00.....	\$7,252.00
PAYS OUT:			
4 Winners @	\$400.00.....	\$1,600.00	
6 Winners @	200.00.....	1,200.00	
11 Winners @	100.00.....	1,100.00	
18 Winners @	25.00.....	450.00	

CASES OR DEALS	
POPPIN' WHEELIES	FORM 1119BN/\$2.00
TAKES IN:	3,626 @ \$2.00 \$7,252.00
PAYS OUT:	
4 Winners @	\$400.00 \$1,600.00
6 Winners @	200.00 1,200.00
11 Winners @	100.00 1,100.00
18 Winners @	25.00 450.00
510 Winners @	2.00 1,020.00
DEFINITE PAYOUT	74.05% \$5,370.00

GRASS PROFIT\$1,882.00
4 DEALS PER CASE

EXTENDED PAYOUT			
TAKES IN:		3,626 @ \$2.00	\$7,252.00
PAYS OUT:			
2 Winners @	\$500.00	\$1,000.00	
2 Winners @	400.00	800.00	
2 Winners @	300.00	600.00	
2 Winners @	225.00	450.00	
2 Winners @	200.00	400.00	
4 Winners @	150.00	600.00	
2 Winners @	125.00	250.00	
1 Winner @	100.00	100.00	
1 Winner @	75.00	75.00	
1 Winner @	50.00	50.00	
1 Winner @	25.00	25.00	

EXTENDED PAYOUT			
TAKES IN: 3,626 @ \$2.00 \$7,252.00			
PAYS OUT:			
2	Winners	@	\$500.00 \$1,000.00
2	Winners	@	400.00 800.00
2	Winners	@	300.00 600.00
2	Winners	@	225.00 450.00
2	Winners	@	200.00 400.00
4	Winners	@	150.00 600.00
2	Winners	@	125.00 250.00
1	Winner	@	100.00 100.00
1	Winner	@	75.00 75.00
1	Winner	@	50.00 50.00
1	Winner	@	25.00 25.00
2	Winners	@	8.00 16.00
6	Winners	@	4.00 24.00
490	Winners	@	2.00 980.00

